



# Product specification

Document number: OSK-SPC-SK6805-EC10-000

Product model: SK6805-EC10-000

Sample number:

Product description: 1.1x1.1x0.33mm Type 0.1Watt Power Embedded  
(MSL: 4)

Version number: 01

Time: 2023-03-09

Customer approval			Opsco approval		
Approval	Audit	Confirmation	Approval	Audit	Confirmation
			KEVIN ZHU	TONI WU	ZHENLEI WU
<input type="checkbox"/> Qualified <input type="checkbox"/> Disqualified Stamp			Stamp		



**\*Before using our products, please search our official website to check the version of the specification. The version of the product specification will be updated in time. Please refer to the latest information on the official website;**

**\*The copyright and the final interpretation right of the product belong to Dongguan opsco Optoelectronic Technology Co., Ltd. if you have special specifications, please contact our engineers;**

**\*Website: <https://www.opscoled.com>**



Factory :7 Weier Road, Qishi Town, Dongguan City. guangdong province,China

Dongguan Tel: (0769)82632725

Dongguan Fax: (0769)82632735

### Change History

Date	Rev. No.	Changes/Reason of changes	Signature
2023-03-09	01	Initial Document	ZHENLEI WU



## CONTENTS

1、 Product overview.....	3
2、 Main Application Field.....	3
3、 Description.....	3
4、 Mechanical Dimensions.....	4
5、 PIN configuration.....	4
6、 Recommended dimensions for PCB .....	4
7、 General description of product naming.....	5
8、 Electrical parameters.....	5
9、 Electrical/Optical Characteristics.....	5
10、 The IC electrical parameters.....	6
11、 Switching characteristics.....	6
12、 The data transmission time .....	7
13、 Timing waveform.....	7
14、 The method of data transmission.....	8
15、 The data structure of 24bit.....	9
16、 The typical application circuit.....	9
17、 Standard LED Performance Graph.....	10
18、 Packaging Standard.....	11
19、 Reliability Test.....	12



## 1. Product Overview :

SK6805-EC10 is an embedded control type LED light source integrating control circuit and light-emitting circuit. It contains intelligent digital interface data latch signal shaping and amplifying drive circuit, power supply voltage regulator circuit, built-in constant current circuit and high precision RC oscillator. The output driver adopts the patented PWM technology, which effectively ensures the high color consistency of the light in the pixel.

The data protocol being used is unipolar RZ communication mode. The 24-bit data is transmitted from the controller to DIN of the first element, and if it is accepted it is extracted pixel to pixel. After an internal data latch, the remaining data is passed through the internal amplification circuit and sent out on the DO port to the remaining pixels. The pixel is reset after the end of DIN. Using automatic shaping forwarding technology makes the number of cascaded pixels without signal transmission only limited by signal transmission speed.

The LED has a low driving voltage (which allows for environmental protection and energy saving), high brightness, scattering angle, good consistency, low power, and long life. The control circuit is integrated in the LED above.

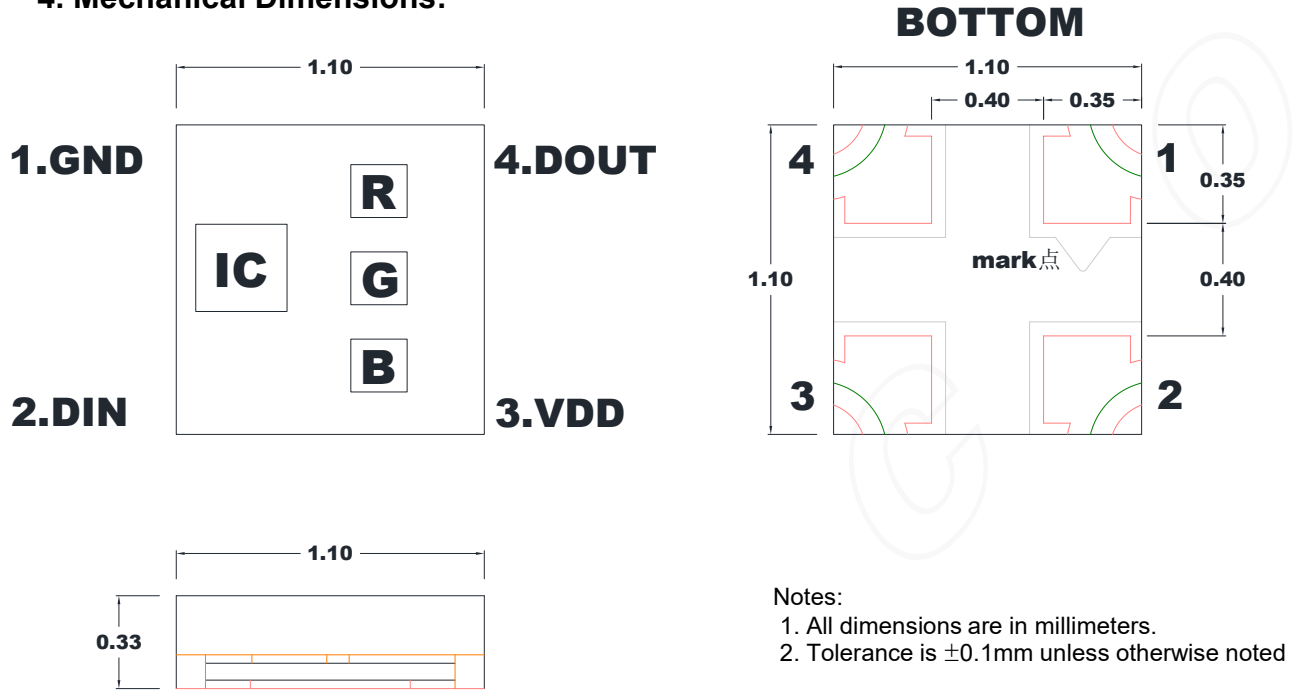
## 2. Main Features :

- Easy To Design
- Easy To Build
- Easy To Program

## 3. Description:

- EC LED internal integrated high quality external control line serial cascade constant current IC;
- built-in data shaping circuit, a pixel signal is received after wave shaping and output waveform distortion will not guarantee a line;
- The built-in power on reset and reset circuit, the power does not work;
- gray level adjusting circuit (256 level gray scale adjustable);
- red drive special treatment, color balance;
- line data transmission;
- plastic forward strengthening technology, the transmission distance between two points over 10M;
- Using a typical data transmission frequency of 800 Kbps, when the refresh rate of 30 frames per sec

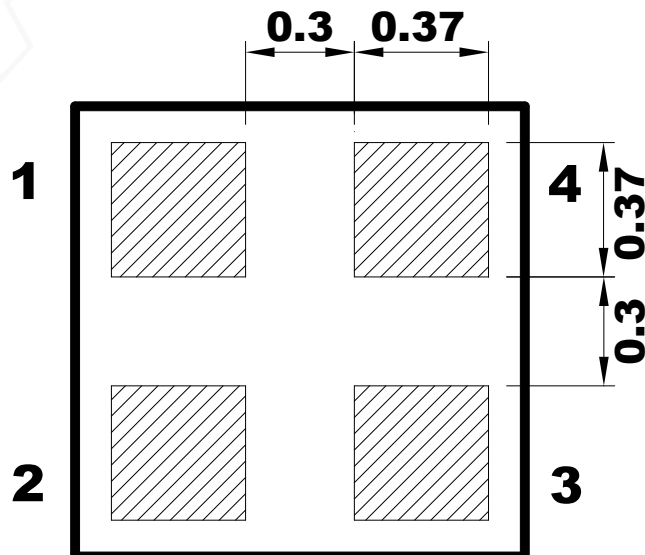
4. Mechanical Dimensions:



5. PIN configuration

NO.	Symbol	Function description
1	GND	Ground
2	DIN	Control data signal input
3	VDD	Power supply LED
4	DOUT	Control data signal output

6. Recommended dimensions for PCB





7. General description of product naming

SK 6805-EC10-000

① ② ③ ④

①	②	③	④
Series	IC series and current code	Package outline	Serial number
The default is to integrate the RGB chip with the IC	Refers to the 68 series 05: IC 5mA current version	1.1x1.1x0.33m m PCB package outline	Internal encoding

8. Electrical parameters (Ta=25°C,VSS=0V) :

Parameter	Symbol	Range	Unit
Power supply voltage	VDD	+3.7~+5.5	V
Logic input voltage	V <sub>IN</sub>	-0.5~VDD+0.5	V
Working temperature	T <sub>opt</sub>	-40~+80	°C
Storage temperature	T <sub>stg</sub>	-40~+80	°C
ESD pressure(HBM)	V <sub>ESD</sub>	2K	V
ESD pressure(DM)	V <sub>ESD</sub>	200	V

9. Electrical/Optical Characteristics:

Color	SK6805-EC10-000 5mA	
	Dominate wavelength(nm)	Luminance(mcd)
Red	620-625	40-160
Green	520-530	120-240
Blue	460-470	20-80

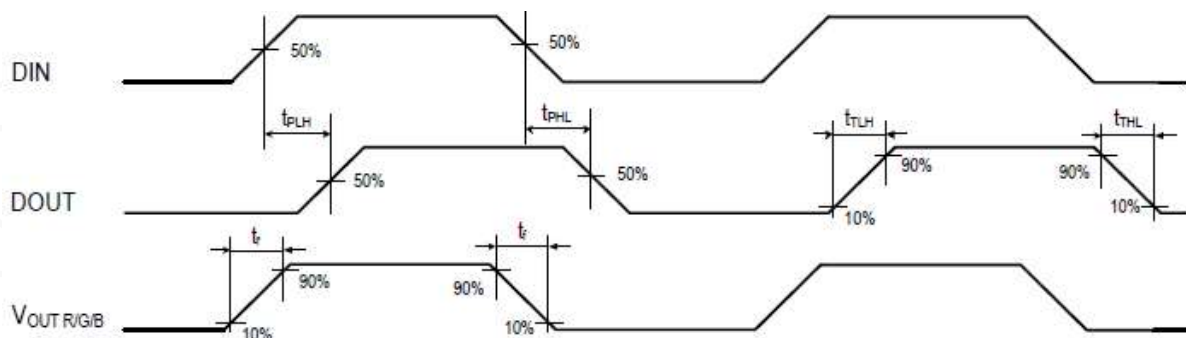


**10. The IC electrical parameters (unless otherwise specified, TA=-20 ~ +70 °C, VDD=4.5 ~ 5.5V, VSS=0V):**

Parmeter	Symbo l	Min	Typical	Max	Unit	Test conditions
The chip supply voltage	VDD	---	5.2	---	V	---
The signal input flip threshold	VIH	0.7*VDD	---	---	V	VDD=5.0V
	VIL	---	---	0.3*VDD	V	
The frequency of PWM	FPWM	---	4	---	KHZ	---
Static power consumption	IDD	---	0.3	---	mA	---

**11. Switching characteristics (VCC=5V Ta=25 °C):**

Parameter	Symbol	Min	Typical	Max	Unit	Test conditions
The speed of data transmission	fDIN	---	800	---	KHZ	The duty ratio of 67% (data 1)
DOUT transmission delay	TPLH	---	---	500	ns	DIN→DOUT
	TPHL	---	---	500	ns	
IOUT Rise/Drop Time	Tr	---	100	---	ns	VDS=1.5 IOUT=5mA
	Tf	---	100	---	ns	





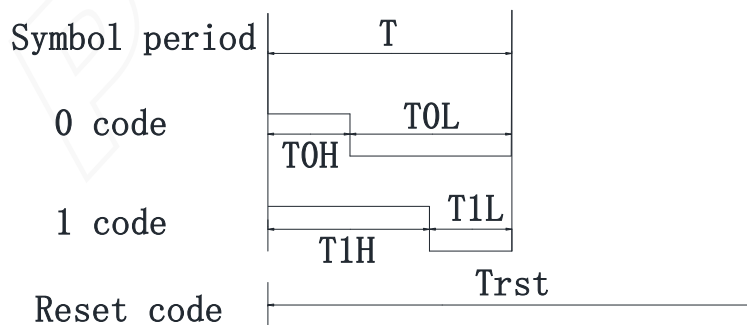
12. The data transmission time :

Name	Min.	Standard value	Max.	Unit
T	1.20	--	--	μs
T0H	0.2	0.3	0.4	μs
T0L	0.8	0.9	1.0	μs
T1H	0.6	0.65	1.0	μs
T1L	0.2	0.55	0.6	μs
Trst	>80	--	--	μs

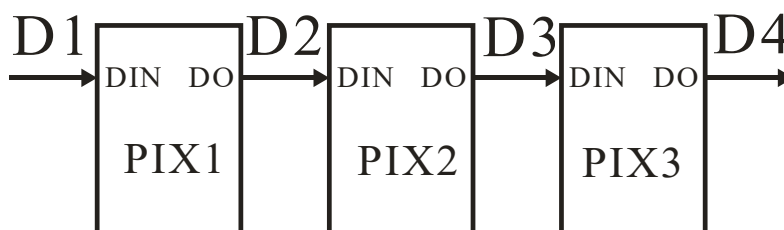
1. The protocol uses a unipolar zeroing code. Each symbol must have a low level. Each symbol in this protocol starts with a high level. The high time width determines the "0" or "1" code. .
2. When writing programs, the minimum symbol period is 1.2μs.
3. The high time of "0" code and "1" code should be in accordance with the stipulated range in the above table. The low time requirement of "0" code and "1" code is less than 20μs.

13. Timing waveform:

Input code:

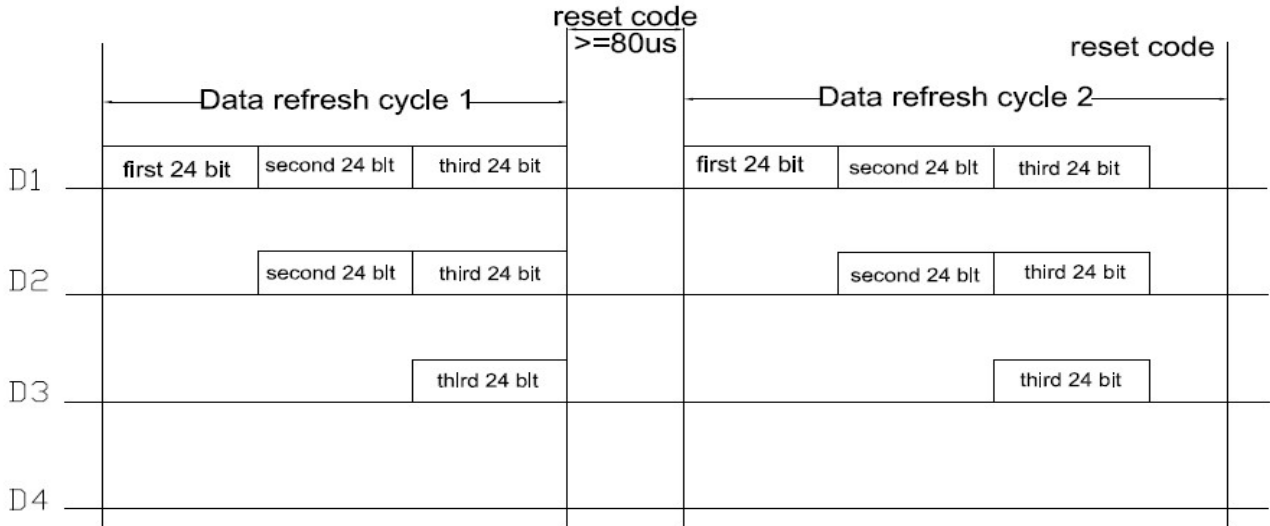


Connection mode:





14. The method of data transmission:



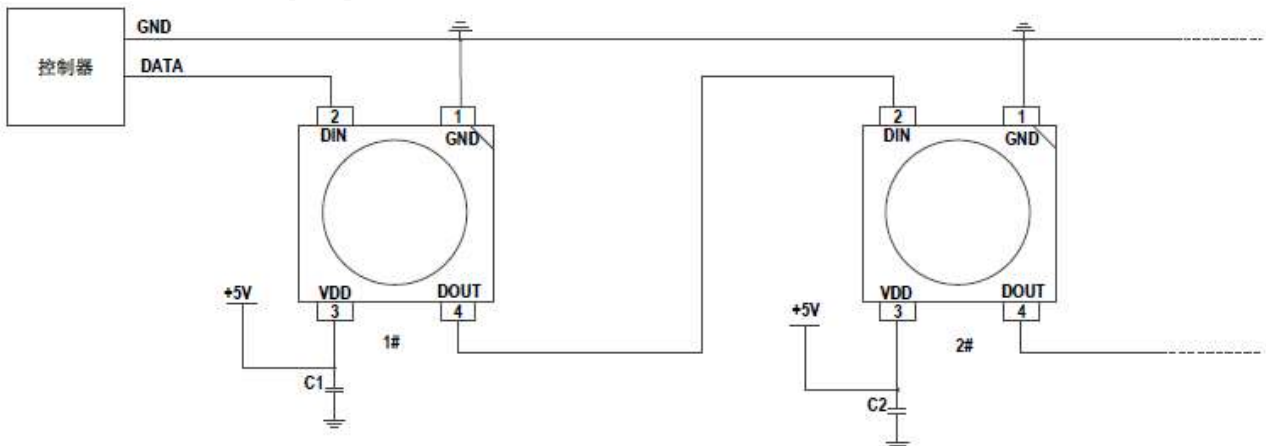
Note: the D1 sends data for MCU, D2, D3, D4 for data forwarding automatic shaping cascade circuit.

15. The data structure of 24bit:



Note: high starting, in order to send data (G7 - G6 - ..... ..B0)

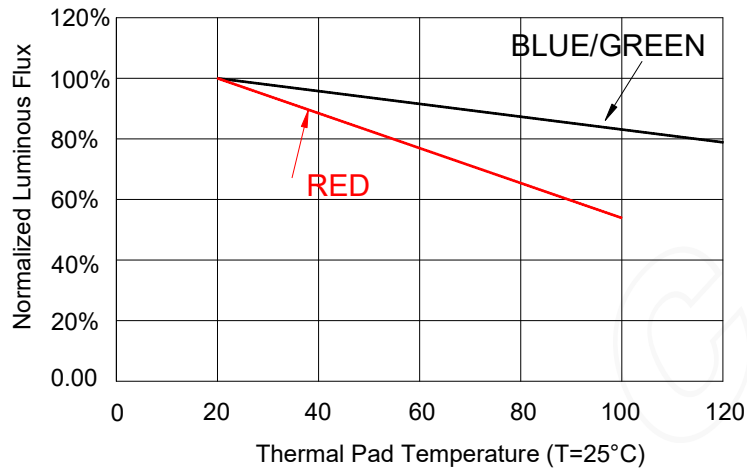
16. The typical application circuit:



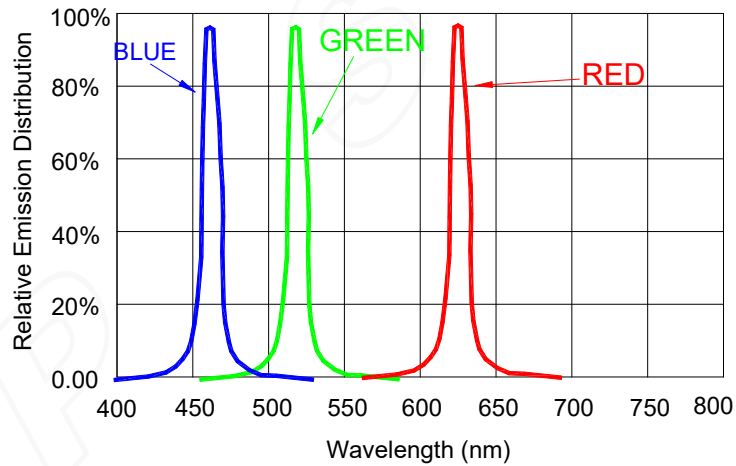
Note: in the above application diagram, C1 and C2 are 100nF / 50V ceramic chip capacitors



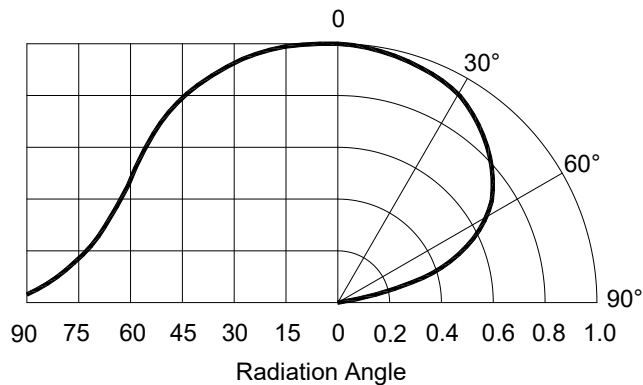
### 17. Standard LED Performance Graph:



Wavelength Characteristics

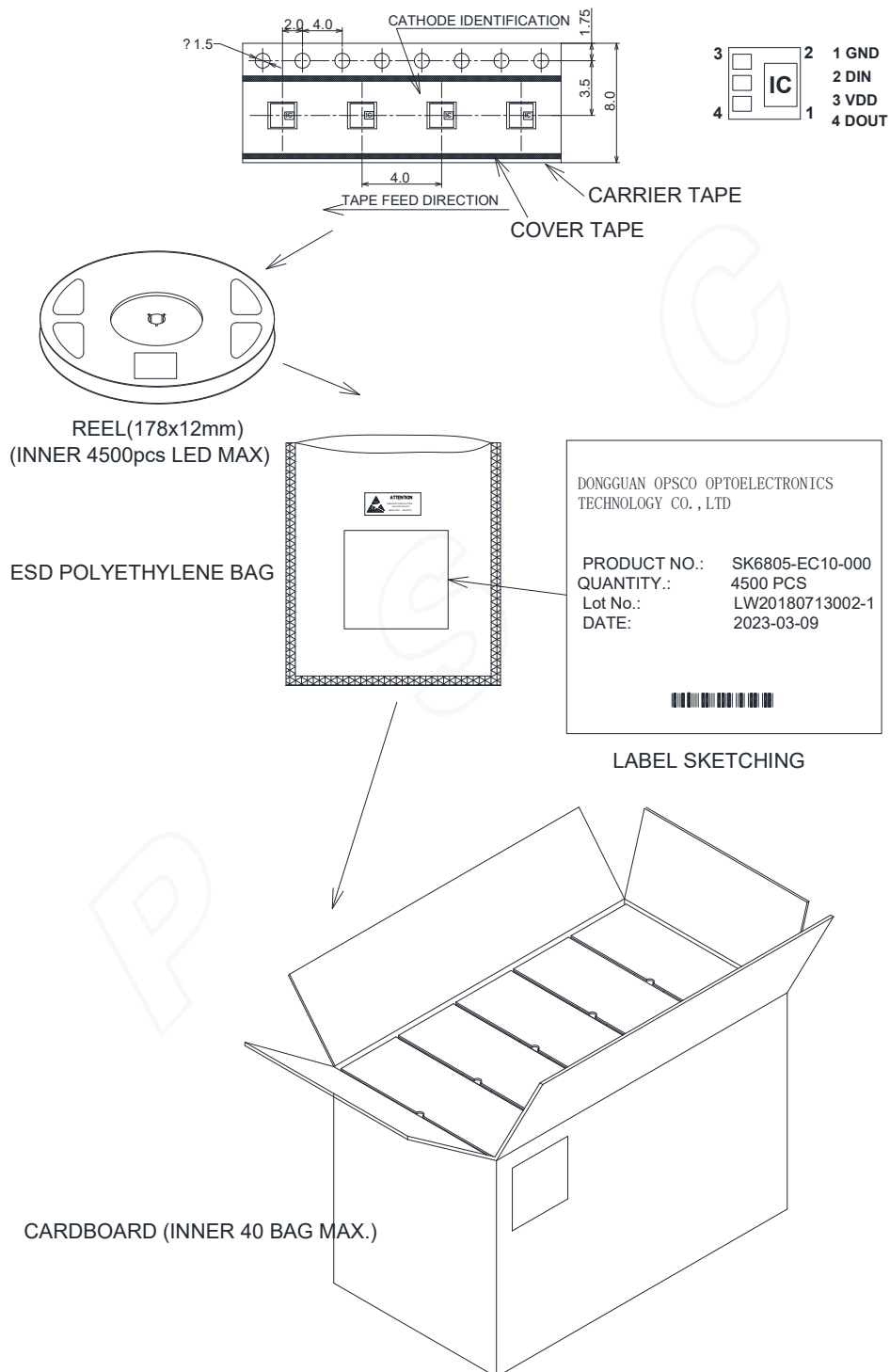


Typical Radiation Pattern 120°



### 18. Packaging Standard:

#### SK6805-EC10-000



The reel pack is applied in SMD LED. The LEDs are packed in cardboard boxes after packaging in normal or anti-electrostatic bags. cardboard boxes will be used to protect the LEDs from mechanical shocks during transportation. The boxes are not water resistant and therefore must be kept away from water and moisture.



**19. Reliability Test :**

NO.	Test item	Test Conditions	Reference	Criterion
1	Thermal Shock	-20 ± 5° C ~ 80° C ± 5° C 15min~15min 100 cycles	MIL-STD-202G	0/22
2	High Temperature Storage	Ta= 100°C 1000hrs	JEITA ED-4701 200 201	0/22
3	Low Temperature Storage	Ta= -40°C 1000hrs	JEITA ED-4701 200 202	0/22
4	High Temperature High Humidity Storage	Ta=85°C RH=85% 1000hrs	JEITA ED-4701 100 103	0/22
5	Temperature Cycle	-20°C~25°C~80°C~25°C 30min~5min~30min~5min 100 cycles	JEITA ED-4701 100 105	0/22
6	Resistance to Soldering Heat	Tsld = 260° C, 10sec. 2 times	JEITA ED-4701 300 301	0/22
7	Room temp Life Test	Ta<35° C, IF: Typical current , 3000hrs	JESD22-A 108D	0/22

**Criteria for Judging the Damage:**

Item	Symbol	Test Condition	Limit	
			Min	Max
Luminous Intensity	IV	DC=5V, Typical current	Init. Value*0.7	---
Resistance to Soldering Heat	---	DC=5V, Typical current	No dead lights or obvious damage	